



Garven Road Stevenston

Community Consultation
July 2022



CUNNINGHAME
HOUSING ASSOCIATION

More than just a landlord



Existing Site



Ardeer Primary School

Ardeer Youth and
Community Centre

Stevenston Train Station

1.5 - 2 Storey Housing

Stevenston Industrial Estate



Stevenston Beach and Tidal Pond

Ardeer Parish Church

1 - 2 Storey Housing

United Free Church of Scotland

2 Storey Housing

1.5 - 2 Storey Housing



Ardeer Parish Church located North-West of site



View of site on North approach from Morris Moodie Avenue



View of site on North approach from Garven Road



View from interior of site looking North to residential gardens and garages.



View from interior of site looking South to residential gardens of Garven Road/Morris Moodie Avenue



View from interior of site looking East to Garven Road

Proposed Layout

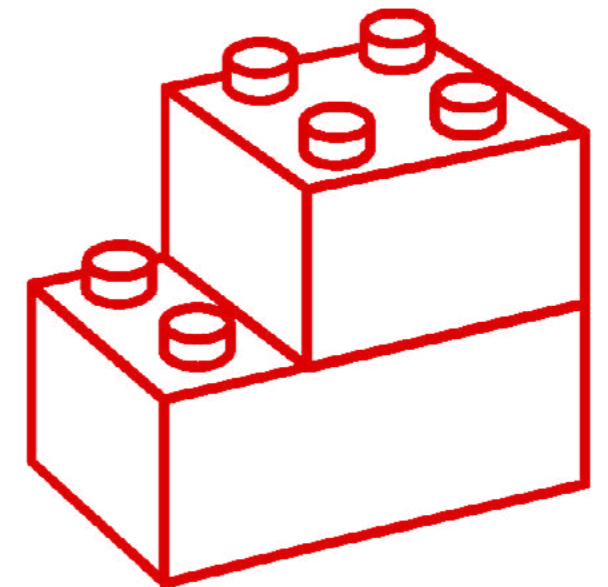




House Type	GIFA	No.
A - 3A4P (End Terrace)	88.3m ²	9
B - 3A4P (Mid Terrace)	87.8m ²	8
C - 3A4P Amenity	78.8.m ²	1
D - 4A6P House	106.9m ²	1
E - 3A4P Wheelchair	94.3m ²	1
Total		20

Proposed Site Layout

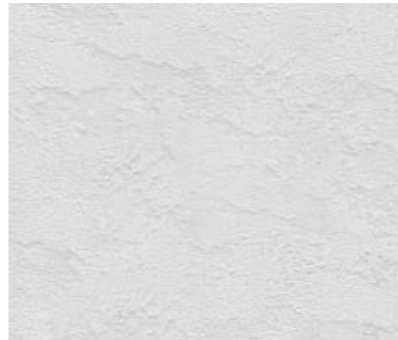
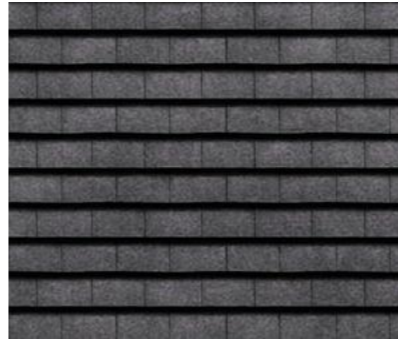
Built Form





Existing Context

.....



Sympathetic Material Palette

+



Feature Material

v



Feature colour to be considered
(Standard Rockpanel Colour Range)



Light weight material above windows and doors. Colour to be selected

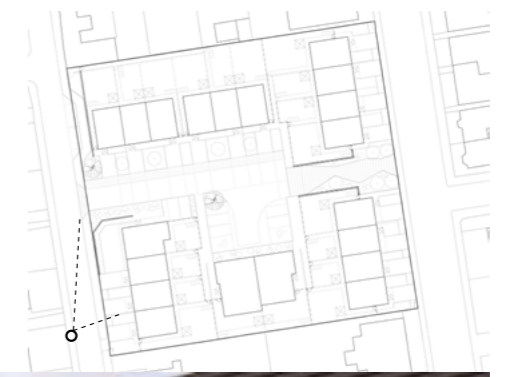
Feature chimneys in response to surrounding context

Off-white roughcast on board to create large opening in brick



Buff brick - colour to be confirmed

In-curtilage parking throughout



Terrace Blocks Morris Moodie Avenue 2 Storey Houses



Feature entrance - possible date stone location



Landscaped pedestrian access to Garven Road

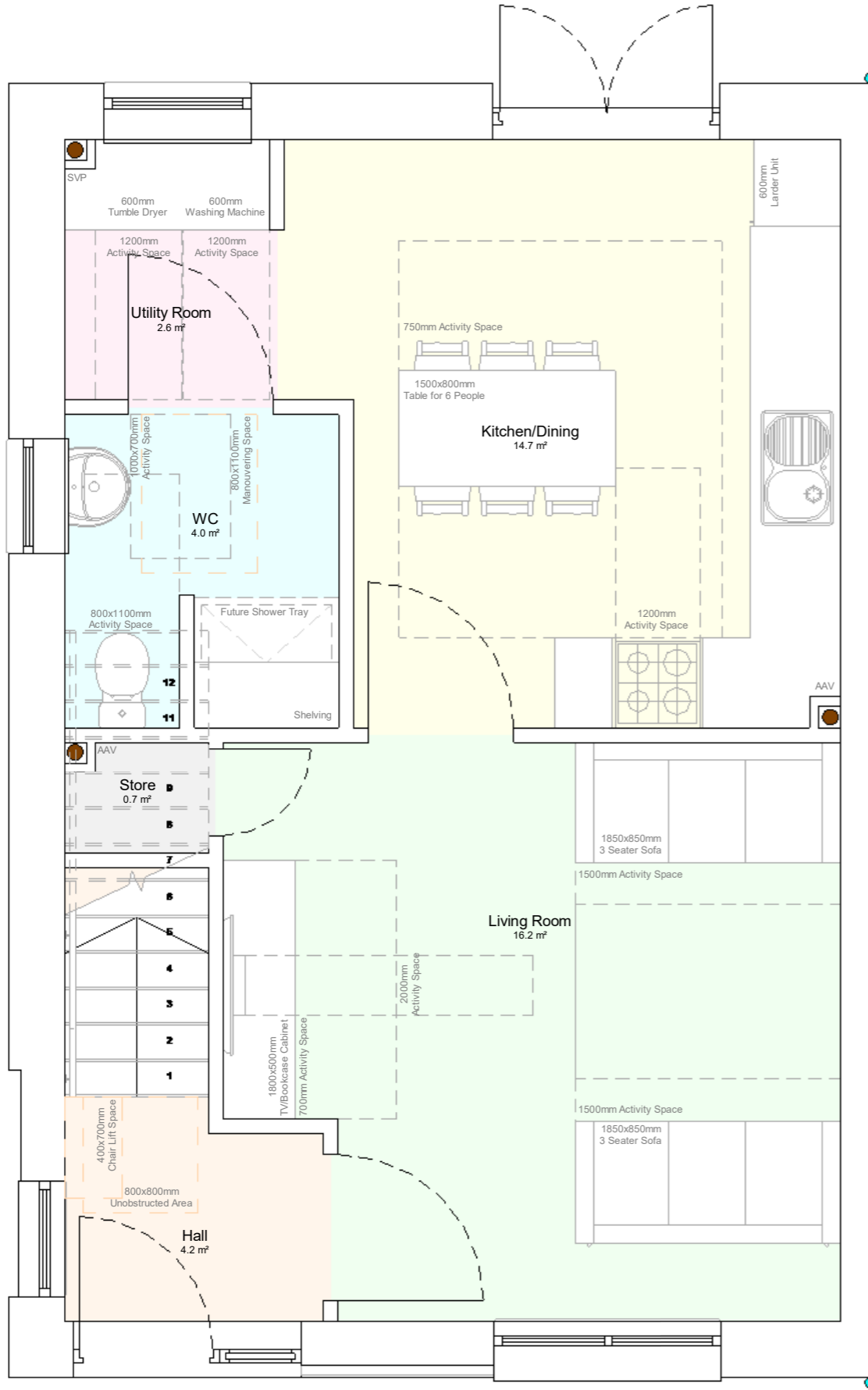
Feature panels replicated to rear elevations

Parking court within development

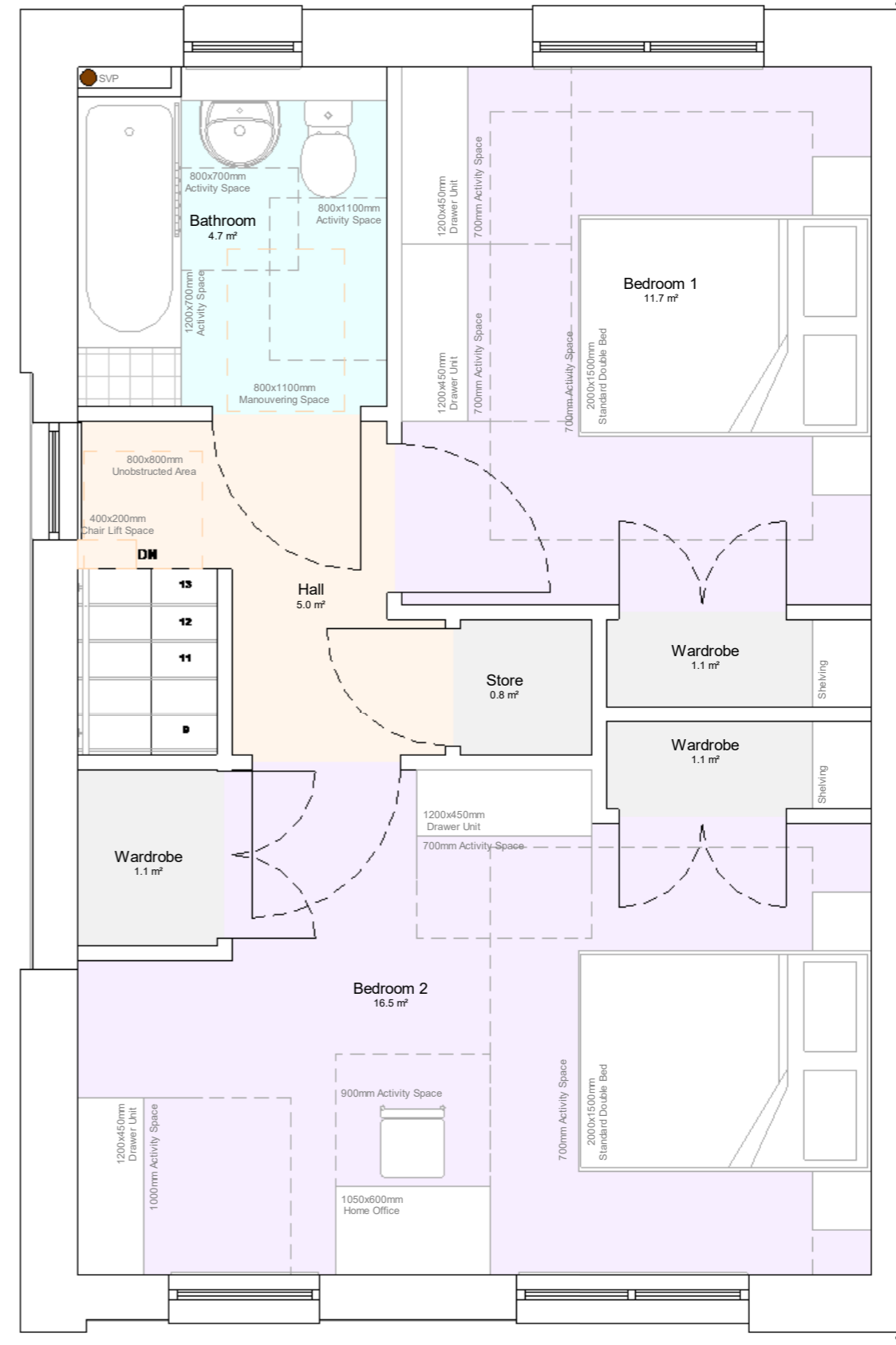
Brick parapet detail to bungalow block

House Types

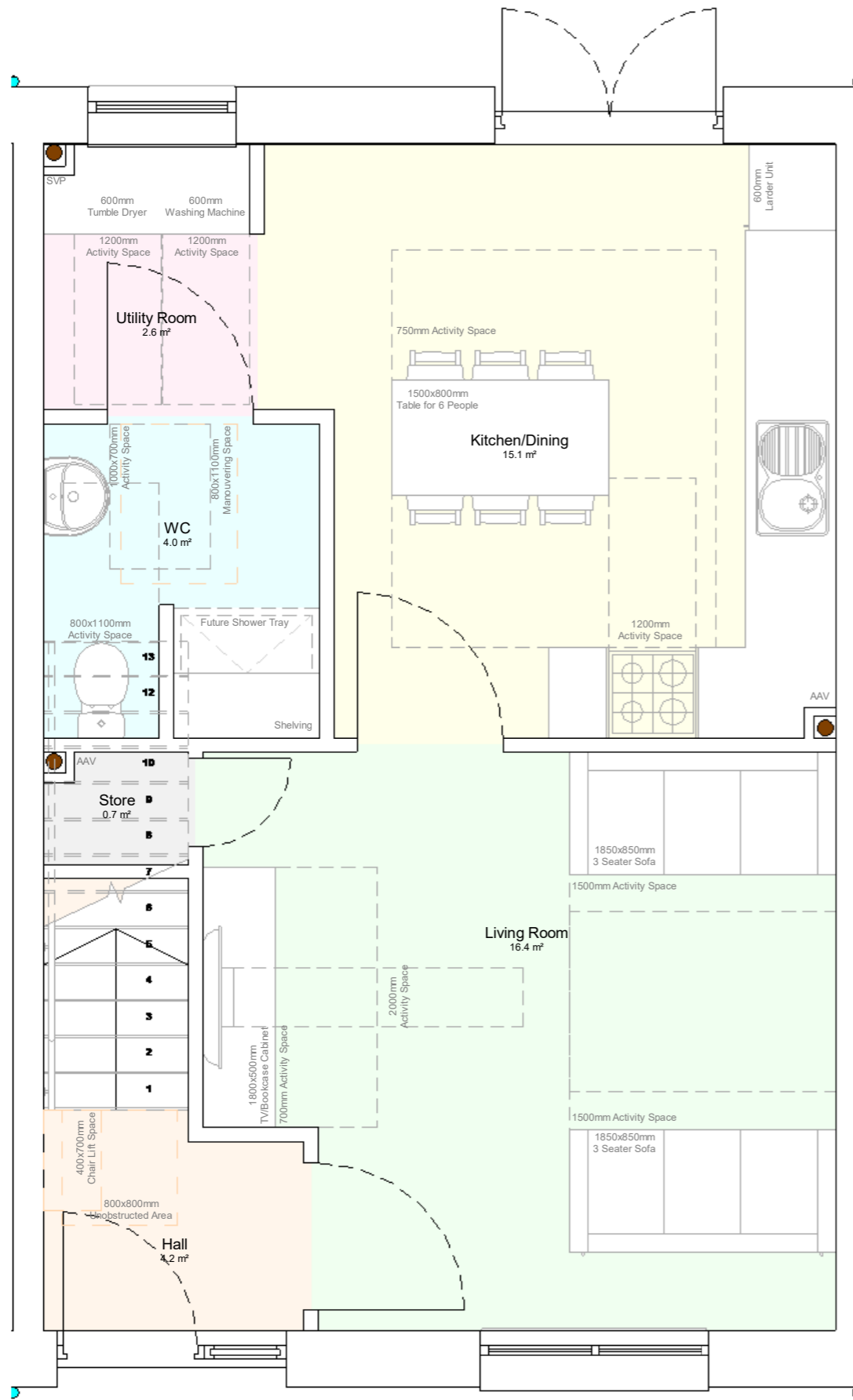




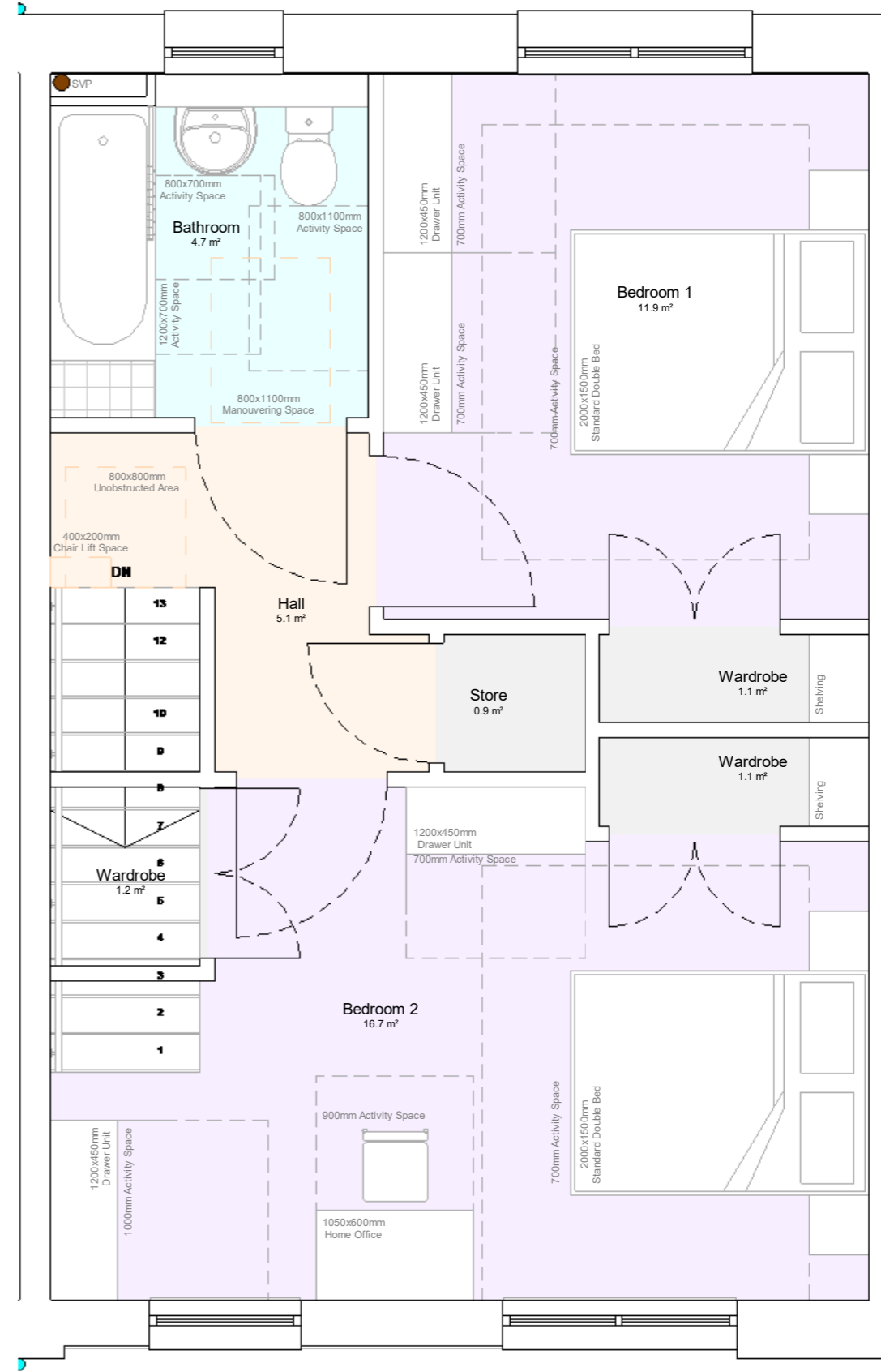
Ground Floor



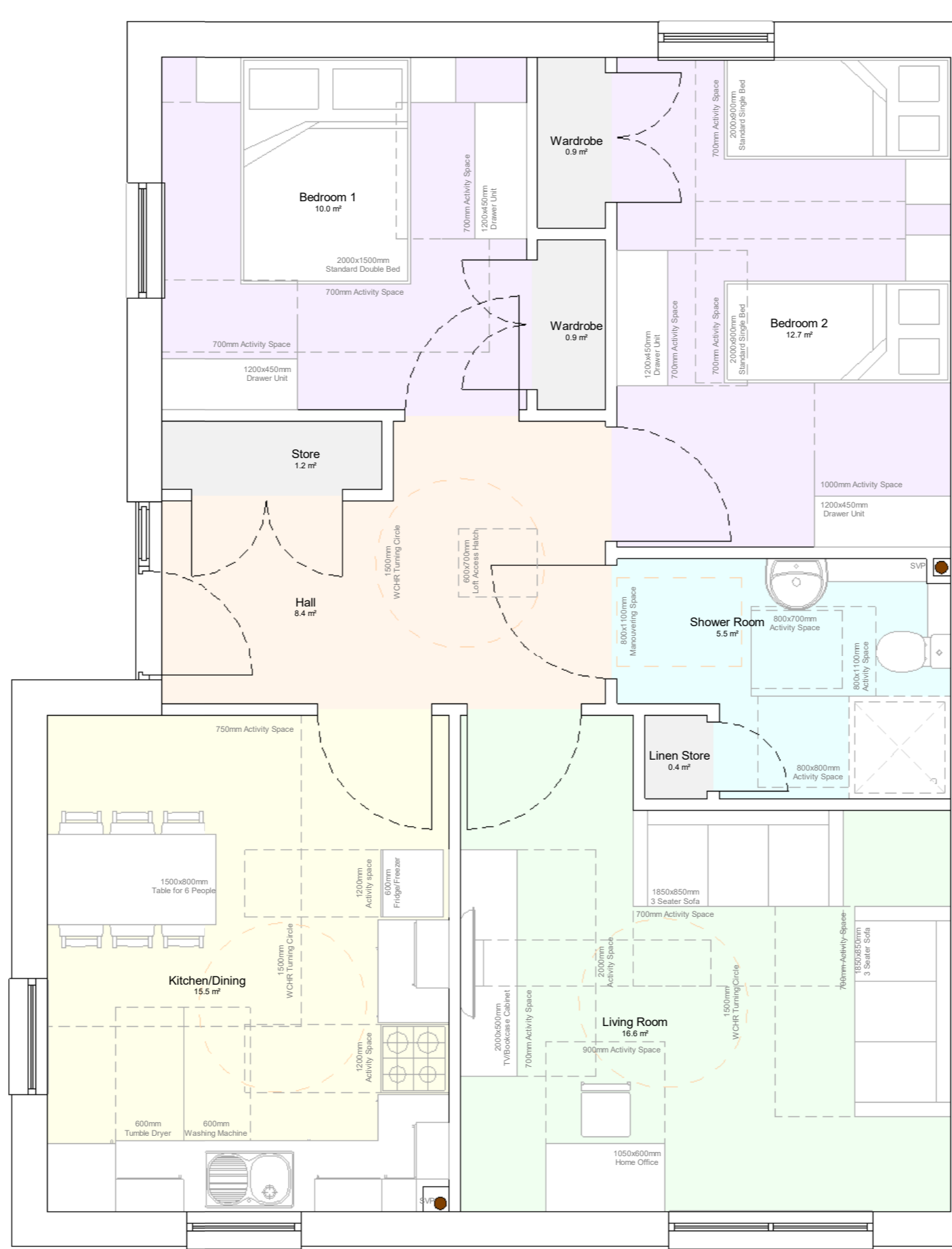
First Floor

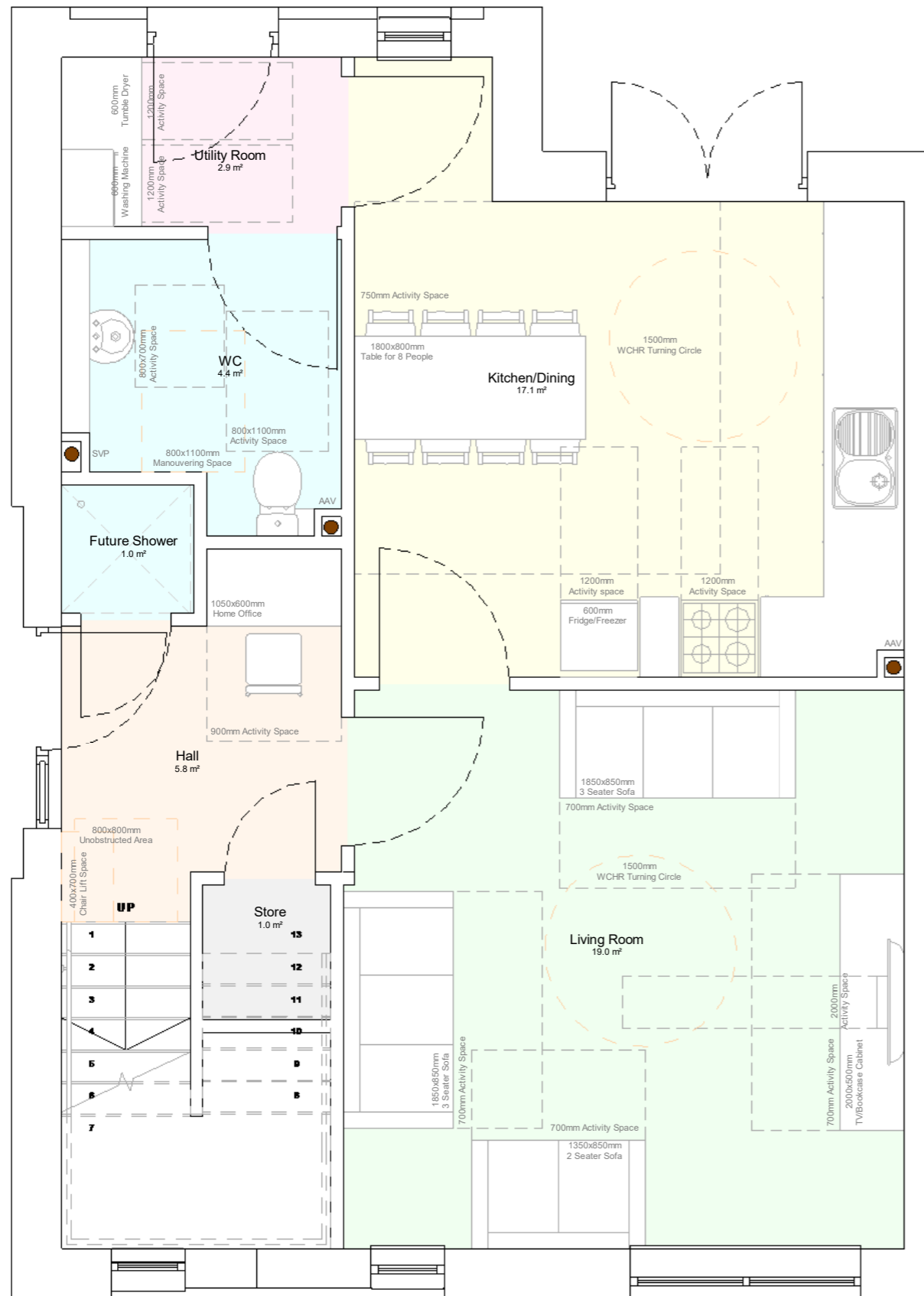


Ground Floor

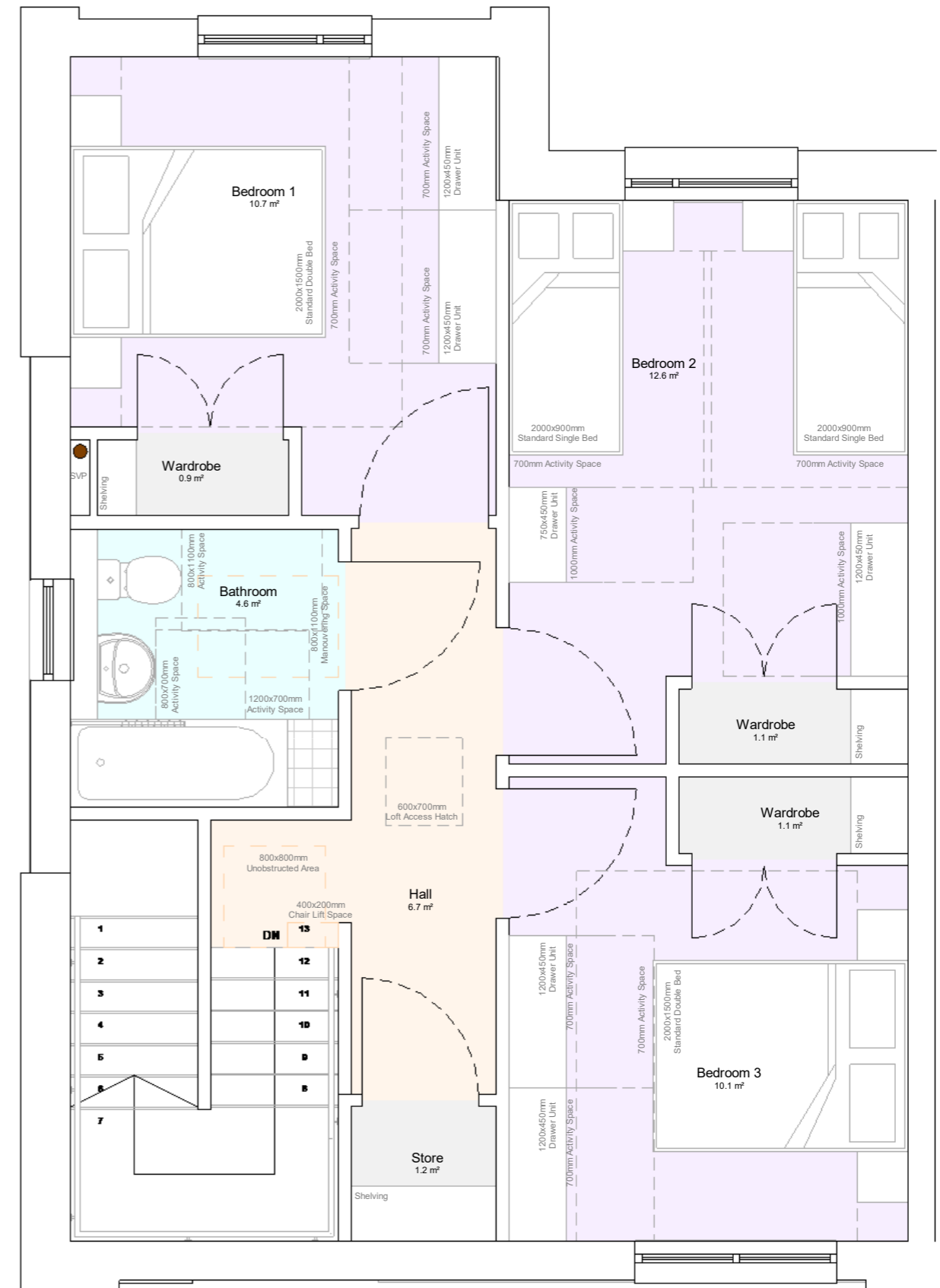


First Floor





Ground Floor



First Floor

